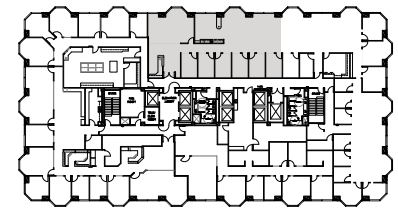
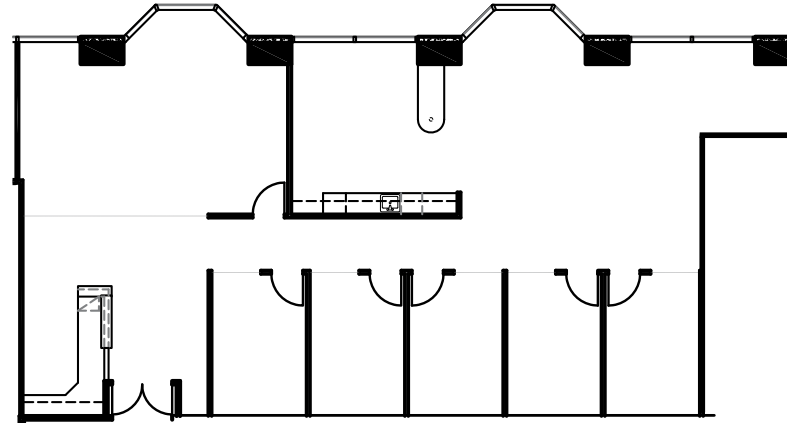


Suite 725

2,947 SF



↑ N

FiVe50
west

Richard Gonor
+1 858 410 1243
richard.gonor@jll.com
RE Lic. #01142178

Tony Russell
+1 858 410 1213
tony.russell@jll.com
Re Lic. #01275372

Bess Wakeman
+1 858 410 1245
bess.wakeman@jll.com
RE Lic. #01177659