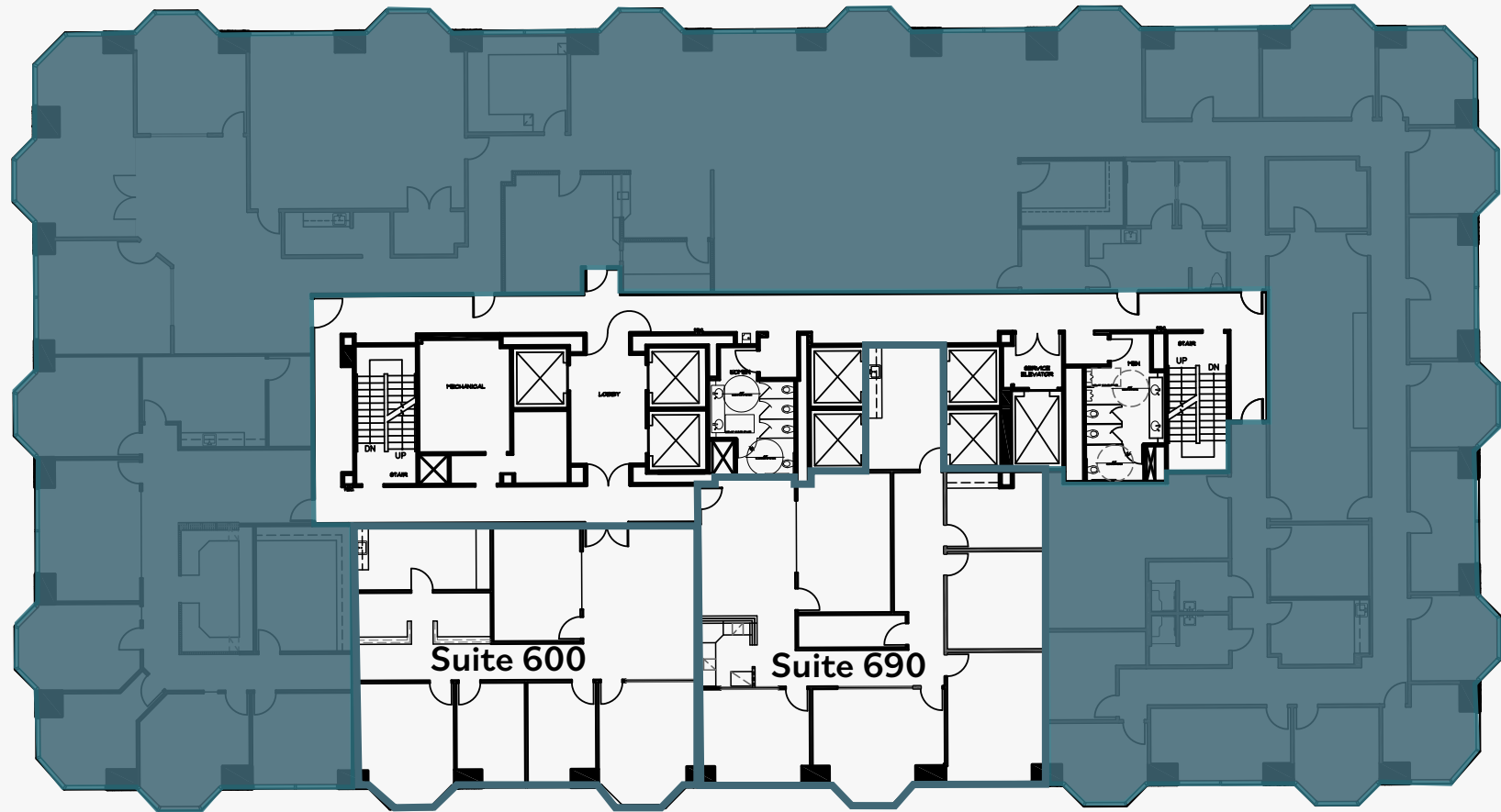


Suite 600 | 2,099 SF

Suite 690 | 2,765 SF | New furnished spec suite. Available with 30 days notice.

\*Contiguous for up to 4,864 SF



**FiVe50**  
west

Richard Gonor  
+1 858 410 1243  
richard.gonor@jll.com  
RE Lic. #01142178

Tony Russell  
+1 858 410 1213  
tony.russell@jll.com  
Re Lic. #01275372

Bess Wakeman  
+1 858 410 1245  
bess.wakeman@jll.com  
RE Lic. #01177659