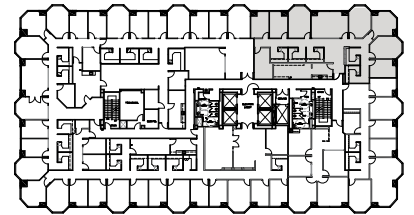
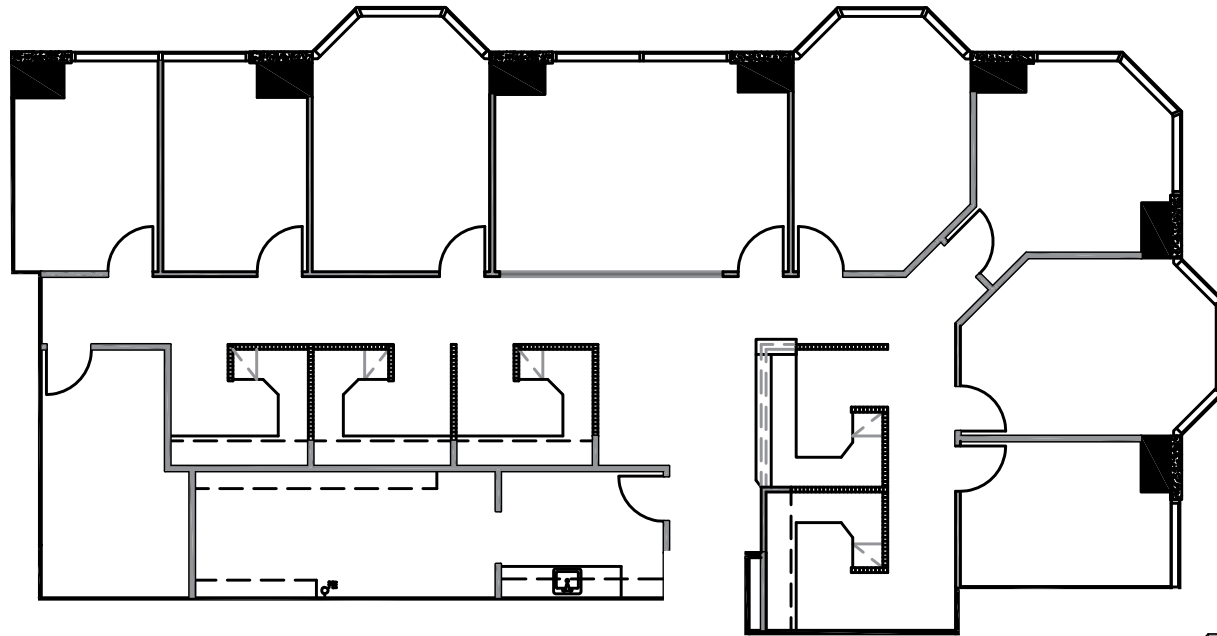


# Suite 1660

3,401 SF



↑ N

FiVe50  
west

Richard Gonor  
+1 858 410 1243  
richard.gonor@jll.com  
RE Lic. #01142178

Tony Russell  
+1 858 410 1213  
tony.russell@jll.com  
Re Lic. #01275372

Bess Wakeman  
+1 858 410 1245  
bess.wakeman@jll.com  
RE Lic. #01177659